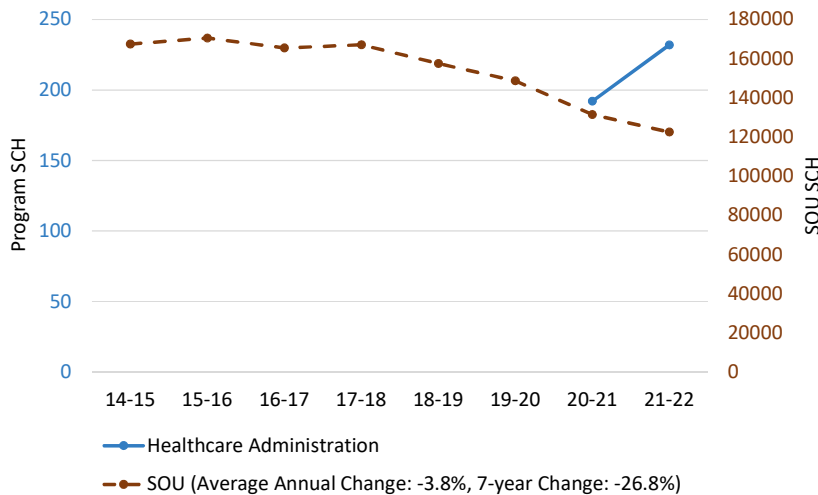


Healthcare Administration

Student Credit Hours (SCH) for Fall, Winter, Spring

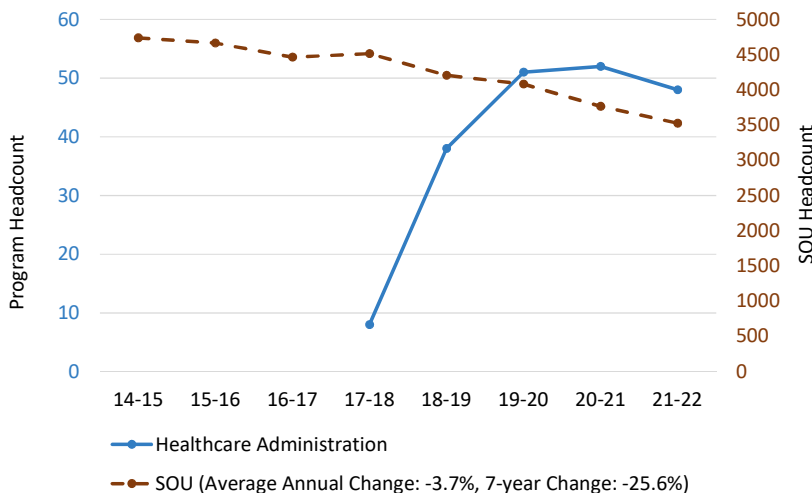


Student Credit Hours (SCH) by Academic Program

An academic program's total SCH is the number of credit hours taken by students in the program's courses. Courses are assigned credit hours based on the amount of instruction and coursework per week. SCH ties directly to revenue; students pay tuition dollars based on credit hours. Also, Oregon's public university funding model (called the Student Success and Completion Model or SSCM) allocates funding based on SCH generated by in-state students.

This graph shows total SCH in an academic program during Fall, Winter, and Spring terms for academic years 2014-15 through 2021-22 (scale on the left side), as well as SOU's total SCH during the same period (scale on the right side). This graph excludes SCH generated during summer terms, through Advanced Southern Credit (high school students receiving SOU credit for approved courses), and through the Osher Lifelong Learning Institute (OLLI).

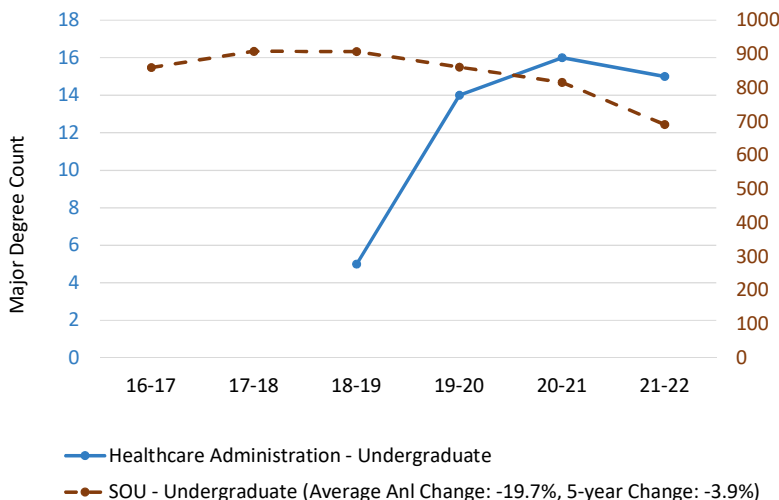
Major Headcount for Fall Term



Major Headcount by Academic Program

Headcount represents the number of students actively pursuing a degree in an academic program. Major headcount includes the sum of all registered students (undergraduate and graduate) with a declared major in the program as of Fall term. Students also pursuing a certificate or minor in a program are not included a second time. Students with a declared co-major across two programs are counted as 0.5 of a student in each program. Headcount for Fall term for the program is shown on the graph's left side and is compared to SOU's total Fall term headcount on the right side.

Degrees Awarded

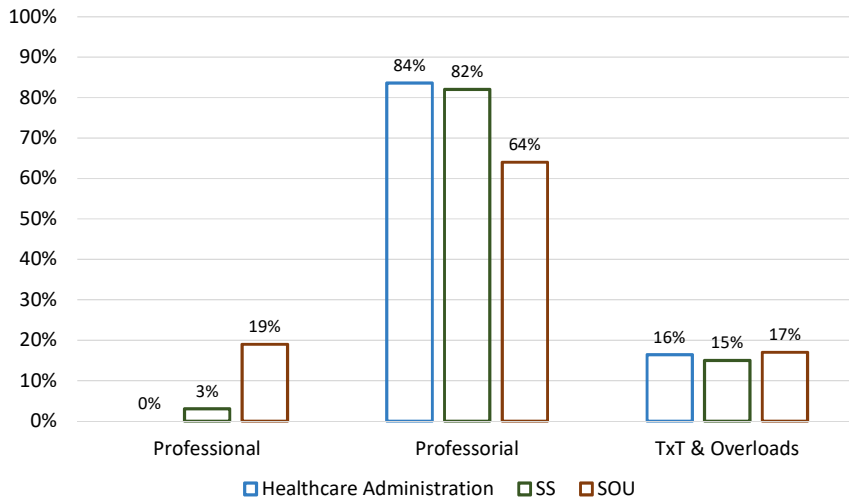


Degrees Awarded by Academic Program

Degrees awarded represent the total number of degrees conferred (undergraduate and graduate), during a full academic year (Fall, Winter, Spring, Summer), to students within an academic program. Students earning a degree in a co-major across two programs are counted as 0.5 of a student in each program. Oregon's funding model allocates funding based on degrees awarded, although some degrees are valued more than others by the model. This graph shows the number of degrees awarded by the program (scale on the left side) and the total number of undergraduate degrees awarded by SOU (scale on the right side).

Healthcare Administration

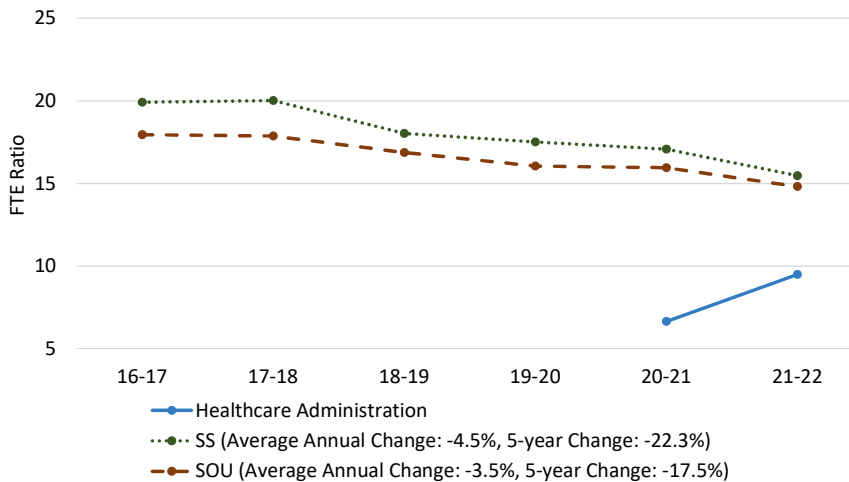
AY21-22 Distribution of Faculty Type



Distribution of Faculty Type by Academic Program

Faculty at SOU are generally categorized as Professional, Professorial, or Term-by-Term adjuncts (TxT). Professional faculty have teaching and service expectations. Professorial faculty have teaching, service and scholarship expectations. TxT instructors are contracted for individual courses on a term-by-term basis. Some faculty teach courses in addition to their regular duties as overloads, which are included under TxT in this analysis. This bar graph shows the percentages of Professional, Professorial and TxT (plus overloads) instructors contributing to the program, as well as the percentages for the program's academic Division and SOU overall.

Student FTE to Department Faculty FTE Ratio



Student FTE to Academic Program Faculty FTE Ratio

This ratio is one measure of efficiency. Simplistically, this ratio answers the question: how many student FTE (full-time equivalent) are taught by one faculty FTE? A higher ratio indicates a program teaching more students per faculty member. Student FTE is calculated for undergraduates by dividing SCH by 45 and for graduates by dividing SCH by 36.