

“How Things Work”: Legislative Process 101

Legislative Body:

Oregon’s Legislative Assembly is primarily responsible for enacting new laws and revising existing ones. Legislators must make decisions regarding the health, education, and general welfare of Oregonians. The Oregon State Legislature is also responsible for the state’s biennial budget.

Like the federal government, Oregon has a bicameral legislature. This means there are two different branches in the legislative body, the Oregon House of Representatives and the Oregon State Senate.

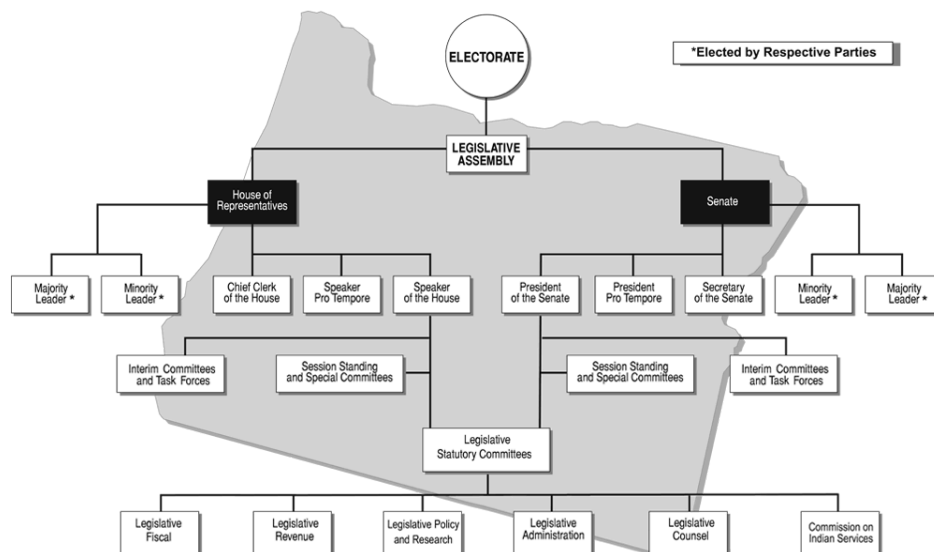
Oregon House of Representatives:

The House of Representatives has 60 members, one for each House district in Oregon. They each serve a two-year term.

Oregon State Senate:

The Senate has 30 members, one for each Senate district in Oregon. They are elected to serve four-year terms. Each Senate district includes two House Districts.

Outlined below is the internal leadership structure of each chamber:



Oregon Legislative Assembly Organization Chart

Legislative Representatives for Southern Oregon:

State Senate District 3 - Senator Jeff Golden (D-Ashland)

State House District 5 - Representative Pam Marsh (D-Ashland)

U.S. Congressional District 2 - Cliff Bentz (R - Ontario)

Senators for Oregon are Senator Jeff Merkley (D) and Senator Ron Wyden (D)

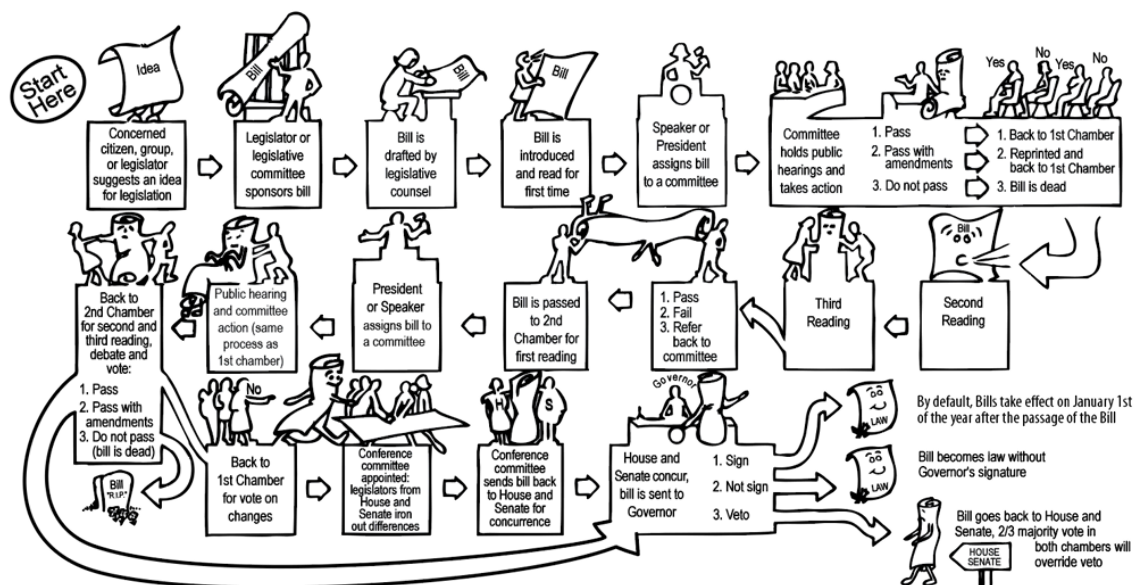
If you are an Oregon resident use [this](#) link to find your representatives.

If you are not an Oregon resident use [this](#) link to find your district's congressional member.

Legislative Process:

The Oregon State Legislature meets within every two year period (a biennium) in a long session and a short session. In odd-numbered years the session runs for a maximum 160 days, beginning in mid-January, and it runs for 35 days in even-numbered years, beginning in February. A legislative session can be extended by five-days with a two-thirds vote in each house.

The development of an idea into a law is complex and iterative. A bill can be introduced in either chamber but must pass through both the House of Representatives and the Senate in the identical form.



Additional information about the Oregon Legislative process can be found [here](#).